

**USB TO HDMI CONVERTER  
USER MANUAL**

**Warning:**

1. Please do not unplug the device when it is working.
2. Directly plug the device to the USB interface of PC. Due to large data transmission, connecting the device bypass USB extender or USB hub is not suggested.

**1. Package Content**



USB to HDMI converter device    User manual x1pc    CD Driver x1pc

**2. Installation Requirements**

- 1). HDTV
- 2). PC with USB3.0/2.0

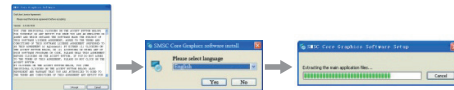
3). Compatible Operating system

- |                  |                        |
|------------------|------------------------|
| <b>Windows®</b>  | <b>Mac®OS X®</b>       |
| ■ windows XP     | ■ Snow Leopard™ 10.6.8 |
| ■ Windows Vista® | ■ Lion® 10.7.2         |
| ■ Windows 7      |                        |

**Note:** Based on the user's hardware configuration and operating system, compatibility may be different.

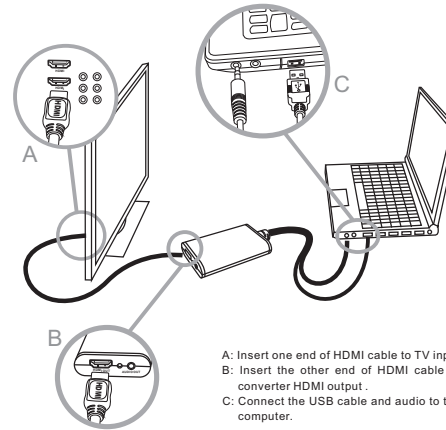
**3. Installation Guide**

Example of installation under Windows XP



1. Agree the statement
2. Select language
3. when installation complete, restart your computer

4. Install the device as the following diagram

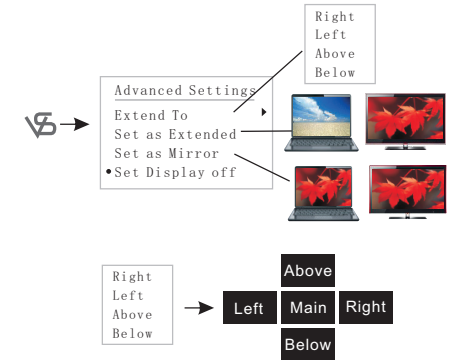


- A: Insert one end of HDMI cable to TV input  
B: Insert the other end of HDMI cable to converter HDMI output.  
C: Connect the USB cable and audio to the computer.

**4. Operation Instructions**

(Take Windows XP for an example)

Click software icon VS on the lower right corner of desktop

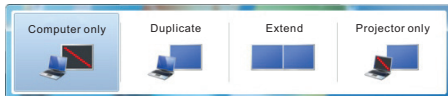


**Note:** Windows 7 or Windows Vista

Click software icon VS on the lower right corner of desktop

Step 1

Click Win+P (keyboard shortcut)



Windows 7 has a nifty projection menu feature which enables you to quickly connect your laptop to a projector or an extended monitor. Win+P is the keyboard shortcut for that purpose.

**5. FAQ**

- Q:** No image output or abnormal display.
- A:** 1). Re-plug USB or change to other PC USB ports.  
2). Unplug USB and restart computer.  
3). Adjust converter output resolution till it is compatible with TV.  
4). If all the above can't do, re-install CD driver.

**Q:** The device can work normally, but refuses to work after the HDMI cable is re-connected.

**A:** Unplug HDMI cable is not allowed when the device is working, or the device will refuse to work till the USB cable is unplugged and plugged in again.

**Q:** Some video can't play normally by some media player software.

**A:** Media player software is not compatible with driver. Try another media player software, or update the media player and the driver.

**Q:** Abnormal display after adjusting the resolution of the device.

**A:** Don't keep other program running, e.g. play video, when you set resolution or output mode of the device.

**Q:** The device doesn't work after restart.

**A:** Please don't connect the device before the computer system is completely started, or the device will not be detected by the computer and work normally.

**Q:** Under XP OS, the video display becomes abnormal after the output model of the device is adjusted by the display properties.

**A:** The computer system is not compatible with the driver. Please use the software of the device to adjust output mode. (see part 4 operating instructions)

**6. Technical specifications**

Power supply	500mA Powered by USB
Resolution	1920*1080
Input	USB 3.0/2.0
Output	HDMI/DVI
Operating system	Windows XP/VISTA/7 Mac®OS X®
Audio input	3.5mm Stereo Audio
Standard	USB connector Type A
Dimensions	16.5*52*80 mm
Minimum	CPU use rate 10%

**Declaration**

The product name and brand name may be registered trade mark of related manufacturers. TM and ® may be omitted on the user manual. The pictures on the user manual are just for reference, and there may be some slight difference with the real products.

In order to keep on supplying the best products, we may update product hardware and software anytime needed. Parameters are subject to change without notice!